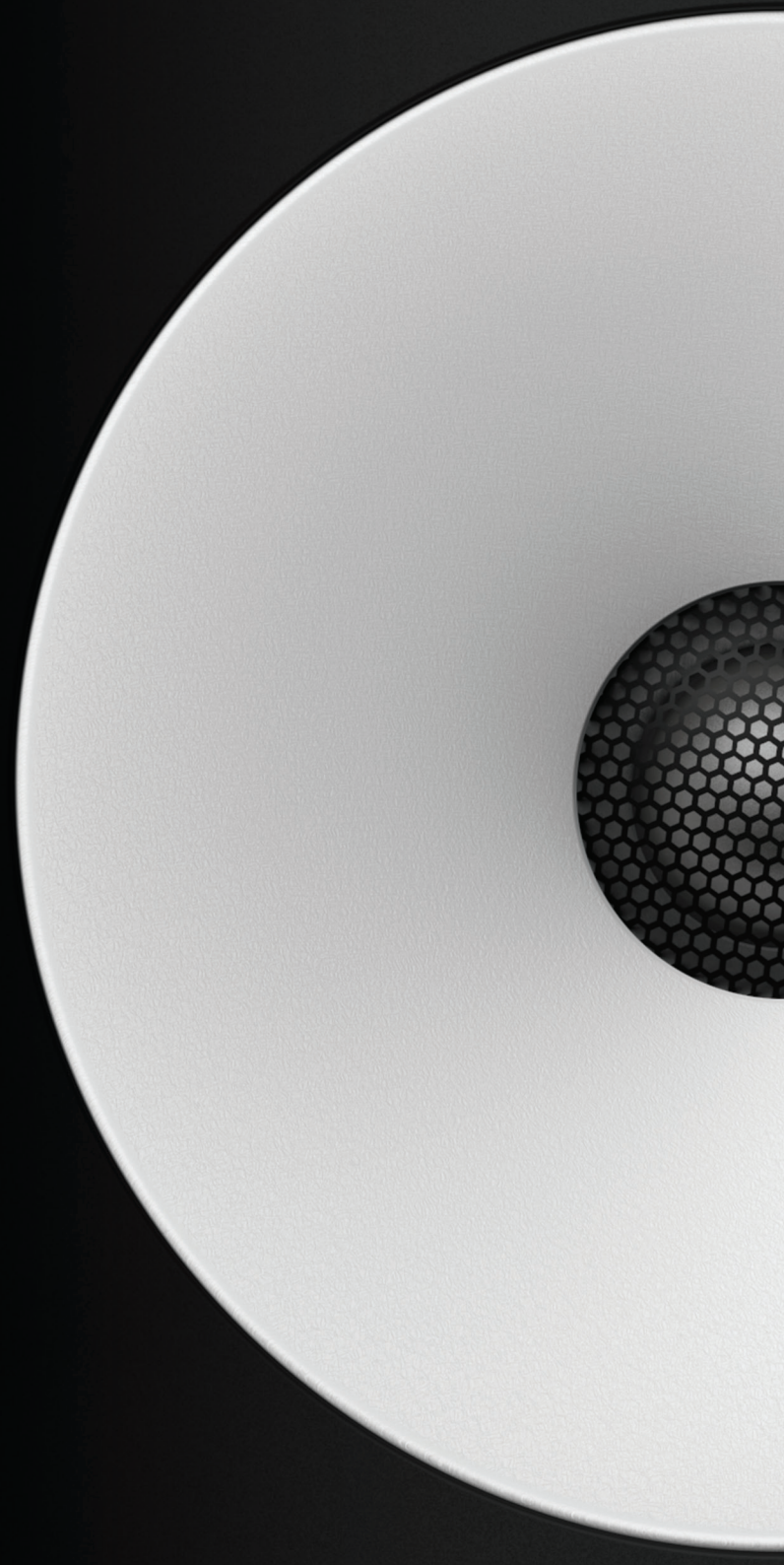


**amphion<sup>®</sup>**



beautifully honest



"The human sense of sound is exhilarating, yet at the same time, complex. Trying to understand how we experience sound, and how it affects us, is a lifelong journey. Some speaker designers focus solely on measurements. For us the correct measurements are only a starting point in trying to understand how to convey emotion.

Our job as a speaker manufacturer is to open a large, clean window to a wonderful world of sound and allow our customers to experience it in an intimate, touching way. The goal is to come up with a pure, highly transparent, and emotionally engaging loudspeaker, which assists in creating results that translate well to all playback devices.

It is humbling that a growing number of the world's best sound engineers rely on our products to weave their magic. We will continue our efforts to provide them with a tool that allows them to bring this sonic exhilaration to as many people as possible."

Anssi Hyvönen  
Founder, CEO  
Amphion Loudspeakers Ltd.



## Hear it all

Your ears are the most important tool in your studio. Providing them with detailed, reliable information is the only way for making right, stress-free decisions. Pushing the acoustic design allows our products to have a simple signal path, as well as ensure transparency, resolution, and exceptional time and phase coherence. All products use time-adjusted drivers and low crossovers. This leads into point-source-like behavior and seamless driver integration. Rock solid "phantom" center, life-like 3D imaging and a wide and deep sweet-spot are characteristic of all Amphion products.

## Truthful sound

Amphion's Uniformly Directive Dispersion (U/D/D) allows the speakers to work in a predictable and acoustically-stable manner in all rooms. Amphion's fifth generation waveguide ensures driver integration, eliminates cabinet diffractions, and produces a uniform and even response throughout a broad frequency band. The result is a wide, even listening area, which provides predictable results in your current room as well as your next. Use of sealed cabinet instead of a vent not only makes for a more natural energy transfer and improved bass definition, but also enhances the midrange clarity.

## Work smarter

Achieving more in less time with minimum revisions, while keeping your clients happy, is a must in today's world. To achieve this, your monitoring must translate well and guide you to focus on the essential information. Being able to totally trust your monitors leads into substantial time savings and peace of mind - even when working towards the tightest deadlines. World class translation and ability to make fast intuitive decisions help achieve consistent results equally well for stereo and all immersive formats.



## One12

Designed for any pro-audio application, these extreme-nearfields allow you to produce predictable results even in smallest, acoustically-challenging rooms. Despite their modest size, One12's provide surprising translation to full range mixing and mastering studios, and all consumer playback systems.

These compact and versatile speakers are flexible enough to find a home in any studio or mobile application in both two-channel as well as multichannel use.



**Operating principle**  
Two-way, passive radiator

**Drivers**  
1" (25 mm) titanium tweeter  
4½" (120 mm) aluminum woofer

**Crossover point**  
1600 Hz

**Sensitivity**  
84dB @ 2.83V/1m

**Frequency response**  
78 – 20.000 Hz ±3dB

**Power recommendation**  
50 – 200 W

**Weight**  
5 kg (11 lbs)

## One15

These easy-to-listen-to, yet honest monitors, allow you to make better decisions faster. Despite their relatively small size, sound engineers working in smaller rooms have made One15 their go-to solution for music, post-production and vocal editing.

Pair the One15 with FlexBase25 to create a small-room full range system, which is suitable across a wide range of modern sound making duties from producing to delivering the final mix.



**Operating principle**  
Two-way, passive radiator

**Drivers**  
1" (25 mm) titanium tweeter  
5½" (150 mm) aluminum woofer

**Crossover point**  
1600 Hz

**Sensitivity**  
84dB @ 2.83 V/1m

**Frequency response**  
49 – 20.000 Hz ±3dB

**Power recommendation**  
50 – 200 W

**Weight**  
7 kg (15 lbs)

## One18

This trusty all-rounder is the most popular model in the Amphon product line. One18 is easy to place and works well for all sound-making tasks in a wide range of rooms. In addition to mixing and mastering, One18 is widely used for recording and production duties in two-as well as multichannel environments.

Like all Amphon products, One18 creates a wide sweet spot, accurate imaging and a vivid phantom centre. A high quality, Amphon-specific 6.5" (180 mm) aluminium driver, combined with the passive radiator, produces controlled, nuance-rich, and reliable bass information.



**Operating principle**  
Two-way, passive radiator

**Drivers**  
1" (25 mm) titanium tweeter  
6½" (180 mm) aluminum woofer

**Crossover point**  
1600 Hz

**Sensitivity**  
85dB @ 2.83V/1m

**Frequency response**  
45 – 20.000 Hz ±3dB

**Power recommendation**  
100 – 350 W

**Weight**  
10 kg (22 lbs)

## Two15

Composing, recording, mixing or mastering, the Two15 delivers the musical detail you require to make the right creative decisions. Building on the strengths of the One15, the dual 5.25" (150 mm) drivers deliver the speed of a smaller speaker while providing headroom, extension, and impact usually found in larger loudspeakers.

Despite being an MTM design, a combination of low crossover point and smaller driver makes the Two15 suitable even for shorter listening distances and is therefore best suited for smaller rooms.



**Operating principle**  
Two-way, passive radiator

**Drivers**  
1" (25 mm) titanium tweeter  
5¼" (150 mm) aluminum woofer

**Crossover point**  
1600 Hz

**Sensitivity**  
86dB @ 2.83V/1m

**Frequency response**  
44 – 20.000 Hz ±3dB

**Power recommendation**  
100– 350 W

**Weight**  
10 kg (22 lbs)

## Two18

In a short period of time, the Two18 has found its way into the world's top studios. Two18 presents dynamic frequency, and transient content with the highest resolution, and draws out the spatial details without masking the big picture.

An increasing number of top engineers find them to be the perfect tool for finishing their work faster while achieving premium results. These transparent and elegantly-truthful studio monitors are perfectly balanced, and suitable for any acoustic environments, personal taste, or music genre. For those who want it all can combine Two18 with BaseTwo25 to create a true state of the art system, which provides surprising resolution and unmatched decision making power all the way to the lowest notes.



**Operating principle**  
Two-way, passive radiator

**Drivers**  
1" (25 mm) titanium tweeter  
6½" (180 mm) aluminum woofer

**Crossover point**  
1600 Hz

**Sensitivity**  
89dB @ 2.83 V/1m

**Frequency response**  
39 – 20.000 Hz ±3dB

**Power recommendation**  
100 – 350 W

**Weight**  
14 kg (31 lbs)



# Amp700

Amp700 delivers rock-solid control and tight, fast, high-resolving power to get maximum performance from your Amphon monitors. To ensure a good level of headroom it delivers 2 x 350W for 8 ohm, and 2 x 700W for 4 ohm load. To reach the required sonic character, an in-house designed buffer-stage was added to complement the merits of the D class technology. The buffer stage also allows you to set the amplifier input sensitivity according to the used speaker model/application, which makes Amp700 highly suitable for all Amphon and other passive monitors.



**Output power**  
@1%THD+N, 2 x 700W, 4Ω / 2 x 350W, 8Ω

**Distortion**  
@1 W: 0,003% (100 Hz)  
@100 W: 0,006% (100 Hz)

**Dynamic range**  
117dB

**Mains**  
Universal mains, auto select  
(100-240 V, 50-60 Hz)

**Speaker connectors**  
3-way binding posts  
(banana, bare wire or spades)

**Weight**  
5 kg (11 lbs)

# Amp400

Available in 8- and 12-channel versions, the Amp400 provides an exceptional level of multichannel amplification. To reach the needed sonic character and performance, an in-house designed buffer-stage was added to complement the merits of the latest Class-D technology. The buffer stage improves the impedance characteristics and cohesion between the channels, so that all channels can form an immaculate ensemble, where even the smallest spatial details can be noticed.



**Output power**  
@1%THD+N, 410W, 4Ω / 205W, 8Ω

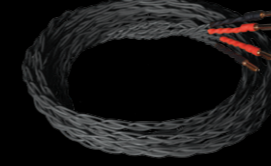
**Distortion**  
@50 W: 0,005% (4Ω / 100Hz)

**Dynamic range**  
121.5dB(A)

**Mains**  
Universal mains, auto select  
(100-240 V, 50-60 Hz)

**Speaker connectors**  
Neutrik Speakon (NL2FX)  
2-pole cable

**Weight**  
8 kg (17.7 lbs)



## Speaker Cable

Specially braided silver coated copper conductor and Chord™ banana connectors

Available in Black

Length: 2.5 m (8.2 ft)  
3.5 m (11.5 ft)

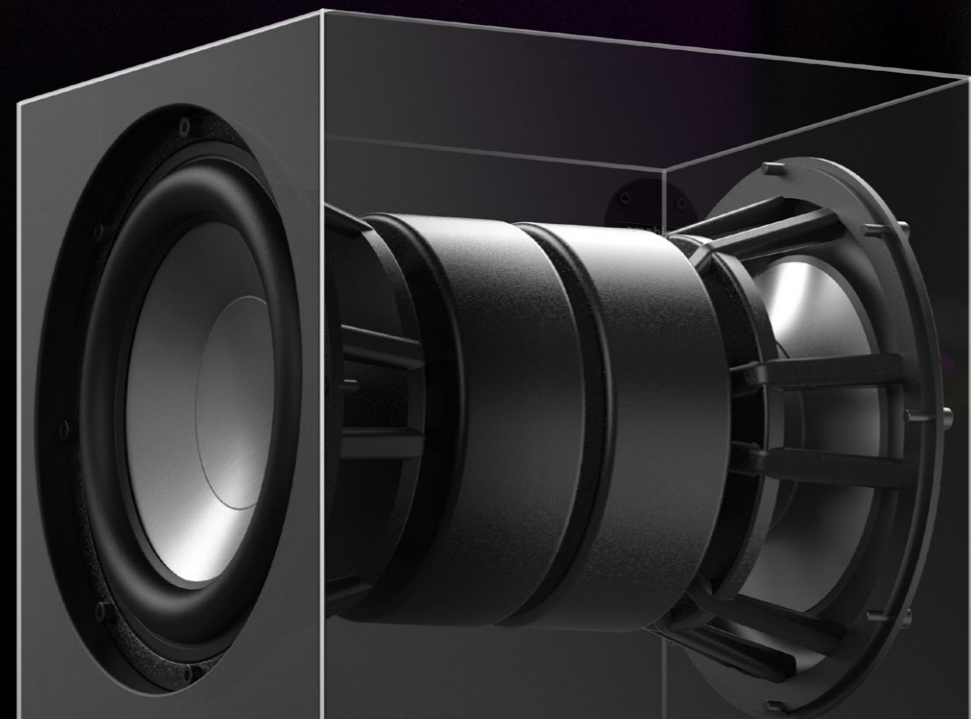


## Adapter

Adapter bracket for connecting Amphon monitors securely to K&M Speaker Wall and Ceilings - Mounts

Compatible with:  
K&M 24471-000-55  
K&M 24481-000-55  
K&M 24496-000-55





## FlexBase25 system

FlexBase25 is a single box, stereo bass unit, which transforms a two-way studio monitor into a full range, three-way system. Wide adjustment possibilities of the FlexAmp's crossover frequencies (35-260 Hz), bass level, and mono | stereo spread allow FlexBase25 to address the various needs of fast-paced modern sound-making simply with a turn of a few dials.

FlexBase25 can be fat, fun, and vibey when writing and producing, or precise, correct, and analytical when putting the finishing touches on a recording or a film score. When bypassed (push-button or optional footswitch), FlexBase25 allows you to continue to use your monitors for a narrower midrange view. Fixed centre-line placement between the monitors and wide adjustment possibilities lead into an easy and intuitive set-up and high performance in all rooms. Pair it with One12, One15 or Two15 for a smaller room, full-range system or place it behind the console while keeping your One18 or Two18 on the meter bridge.



**Operating principle**  
One way closed box, stereo

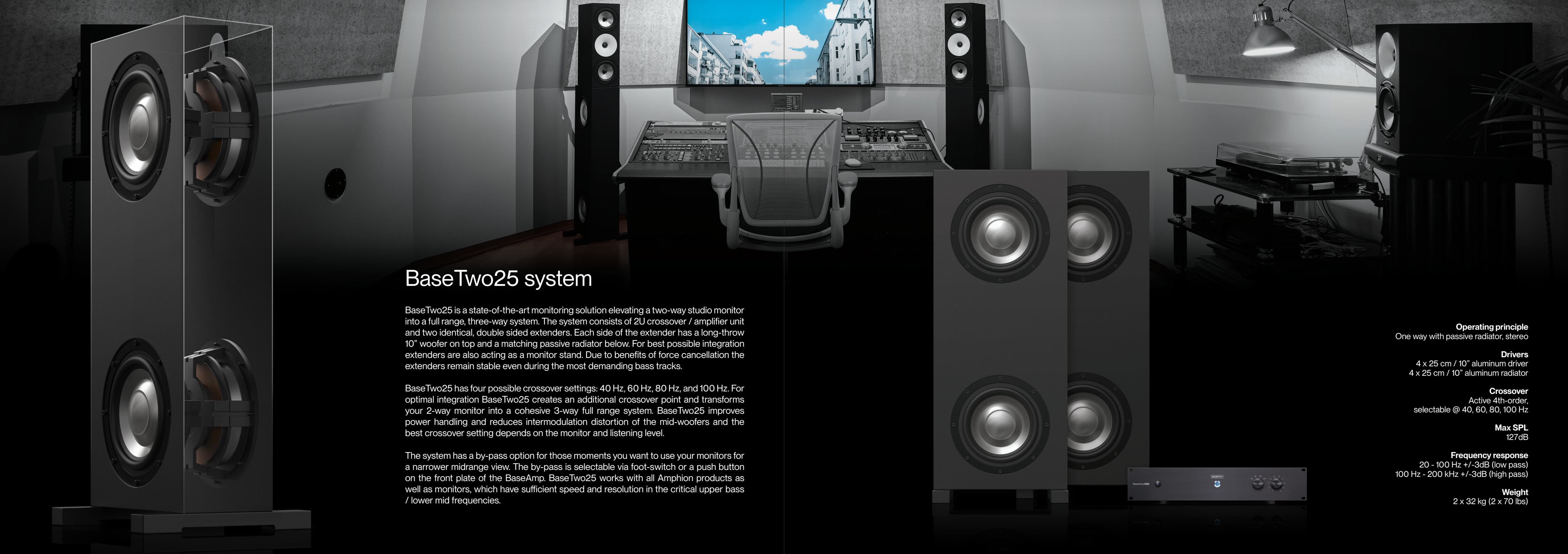
**Drivers**  
2 x 25 cm / 10" aluminum driver

**Crossover**  
Active 4th-order @ 35-260 Hz

**Max SPL**  
117dB

**Frequency Response**  
20 - 260 Hz +/-3dB (low pass)  
35 Hz - 200 kHz +/-3dB (high pass)

**Weight**  
45 kg (99 lbs)



## BaseTwo25 system

BaseTwo25 is a state-of-the-art monitoring solution elevating a two-way studio monitor into a full range, three-way system. The system consists of 2U crossover / amplifier unit and two identical, double sided extenders. Each side of the extender has a long-throw 10" woofer on top and a matching passive radiator below. For best possible integration extenders are also acting as a monitor stand. Due to benefits of force cancellation the extenders remain stable even during the most demanding bass tracks.

BaseTwo25 has four possible crossover settings: 40 Hz, 60 Hz, 80 Hz, and 100 Hz. For optimal integration BaseTwo25 creates an additional crossover point and transforms your 2-way monitor into a cohesive 3-way full range system. BaseTwo25 improves power handling and reduces intermodulation distortion of the mid-woofers and the best crossover setting depends on the monitor and listening level.

The system has a by-pass option for those moments you want to use your monitors for a narrower midrange view. The by-pass is selectable via foot-switch or a push button on the front plate of the BaseAmp. BaseTwo25 works with all Amphion products as well as monitors, which have sufficient speed and resolution in the critical upper bass / lower mid frequencies.

**Operating principle**  
One way with passive radiator, stereo

**Drivers**  
4 x 25 cm / 10" aluminum driver  
4 x 25 cm / 10" aluminum radiator

**Crossover**  
Active 4th-order,  
selectable @ 40, 60, 80, 100 Hz

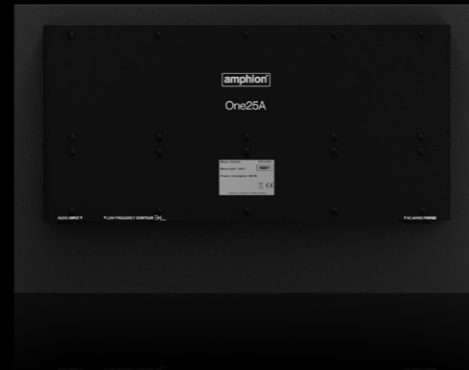
**Max SPL**  
127dB

**Frequency response**  
20 - 100 Hz +/-3dB (low pass)  
100 Hz - 200 kHz +/-3dB (high pass)

**Weight**  
2 x 32 kg (2 x 70 lbs)

## One25A

Amphion One25A is a 3-way studio monitor based on Amphion's core strengths of advanced acoustic design, signal path purity, and revealing yet pleasing tonality, enhanced with the benefits of an active design. An innovative sealed dual cabinet improves clarity of all frequencies by separating the midrange chamber from the hexagon-shaped bass enclosure. Plenty of amplifier headroom, an elegant simple signal path free of unnecessary DSP and AD/DA stages, and a protection limiter which is only in the signal path when needed, contribute to the highest level of immediacy and resolution. To minimize the harmful interaction of drivers and electrical components, all electronics are housed outside in a solid, well-isolated Amp Pack, which can be easily separated from the enclosure for soffit-mounting applications.



**Operating principle**  
Active, 3-way, sealed cabinet

**Drivers**  
25 mm / 1" titanium  
15 cm / 5¼" aluminium  
25 cm / 10" aluminium

**Crossover point**  
100 Hz / 2000 Hz

**Amplifier power**  
Bass 700W  
Tweeter & Midrange 2 x 205W  
THD + N 0,002%

**Frequency response**  
22 - 55 000 Hz (-3dB)

**Max SPL**  
105 dB

**Connections**  
Balanced XLR Input  
1x Female XLR, pin 2-hot

**Mains**  
230 V / 50 Hz or 115 V / 60 Hz  
(Factory preset)

**Weight**  
41 kg / 91 lb



# beautifully honest

## Factory & Headquarters

Telkkistentie 2  
70460 Kuopio  
Finland  
info@amphion.fi

## Asia-Pacific | Subcontinent | Middle East

Ariake Frontier Bldg 9F Tower B,  
3-7-26 Ariake Koto-ku Tokyo 135-0063

## Japan

+81 80 3732 9014 (Japan)  
asiapacific@amphion.fi

## North America

Los Angeles, CA  
us@amphion.fi



amphion.fi



Amphion Loudspeakers



amphion\_loudspeakers



Amphion Loudspeakers