

LFE15

Owner's Manual





PRODUCT REGISTRATION

Please complete the product registration form
for your Barefoot Sound studio monitors
to be registered for warranty and product updates.

[CLICK HERE TO REGISTER NOW](#)



PROTECT YOUR BAREFOOT MONITORS

We will keep the model number and date of
purchase of your new Barefoot Sound product on
file to help you refer to this information in the event
of an insurance claim such as loss or theft.

LFE15

Owner’s Manual

CONTENTS

Description	04
Warnings! (please read carefully)	05
Compatibility	06
Immersive Room Example	07
Monitor Section Example	07
Immersive Room Example	08
Inputs and Controls	09
Modes	10
Dual-Force™ Technology	11
Specifications	12
Drawings & Dimensions	13
Limited Warranty	14
Warranty Conditions	14
Obtaining Warranty Service	15
Post Warranty Repair	15
Warranty Exclusions	16
Service Request	16



Description

The **LFE15 Subwoofer** by Barefoot Sound – your ultimate solution for immersive audio. Designed for low-frequency effects channels, the LFE15 features our powerful Dual-Force™ Technology. With two opposing 15" drivers working in perfect unity, it eliminates cabinet vibrations at the source, delivering tight and dynamic low-frequency extension like never before.

Seamless Integration

The LFE15 pairs effortlessly with any Barefoot Sound monitor. Whether you're enhancing your Barefoot Sound surround system or building a Dolby Atmos setup, the LFE15 extends bass frequencies down to an earth-shaking 15Hz, providing a truly immersive audio experience.

Unmatched Versatility

Discover the LFE15's unique Boost Mode. Unlike typical 2.1 crossovers, Boost Mode enhances and extends low frequencies in a stereo setup, thanks to a 1st-order minimum phase low-pass filter. This prevents phase cancellation and brings unprecedented power, depth, and impact to your sound.

Trusted Performance

Engineered for excellence, the LFE15 is the ideal addition to any high-end audio setup. Experience the revolutionary difference in sound quality and performance that Barefoot Sound is known for.



Warnings

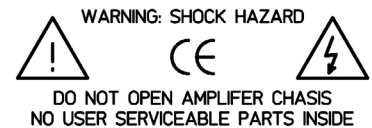
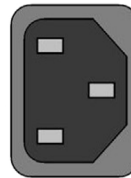
The Mains power voltage must never exceed 250 VAC. Connecting the power cord to AC power line voltages over 250 VAC will damage the amplifier and may cause the risk of fire. Such damage is NOT covered under warranty.

REAR PANEL POWER INPUT LAYOUT.

POWER



100-230VAC
50-60Hz
1600 VA Max



Please read and follow the safety information below:

- Do not remove the rear amplifier panel. There is a risk of electric shock. No user serviceable parts are inside. Please refer service issues to a qualified technician.
- Do not operate this device with an ungrounded mains power cable or a mains connection that is ungrounded. This may result in personal injury.
- Do not place open flames such as lighted candles on or near this device.
- Do not expose this device to water, rain or high humidity. Do not place objects filled with liquids, such as vases, on or near this device.
- This subwoofer requires adequate airflow to maintain proper cooling. Do not obstruct airflow around the subwoofer.
- Do not operate this device in ambient temperatures above 30°C (85°F). Over-temperature may cause device failure.

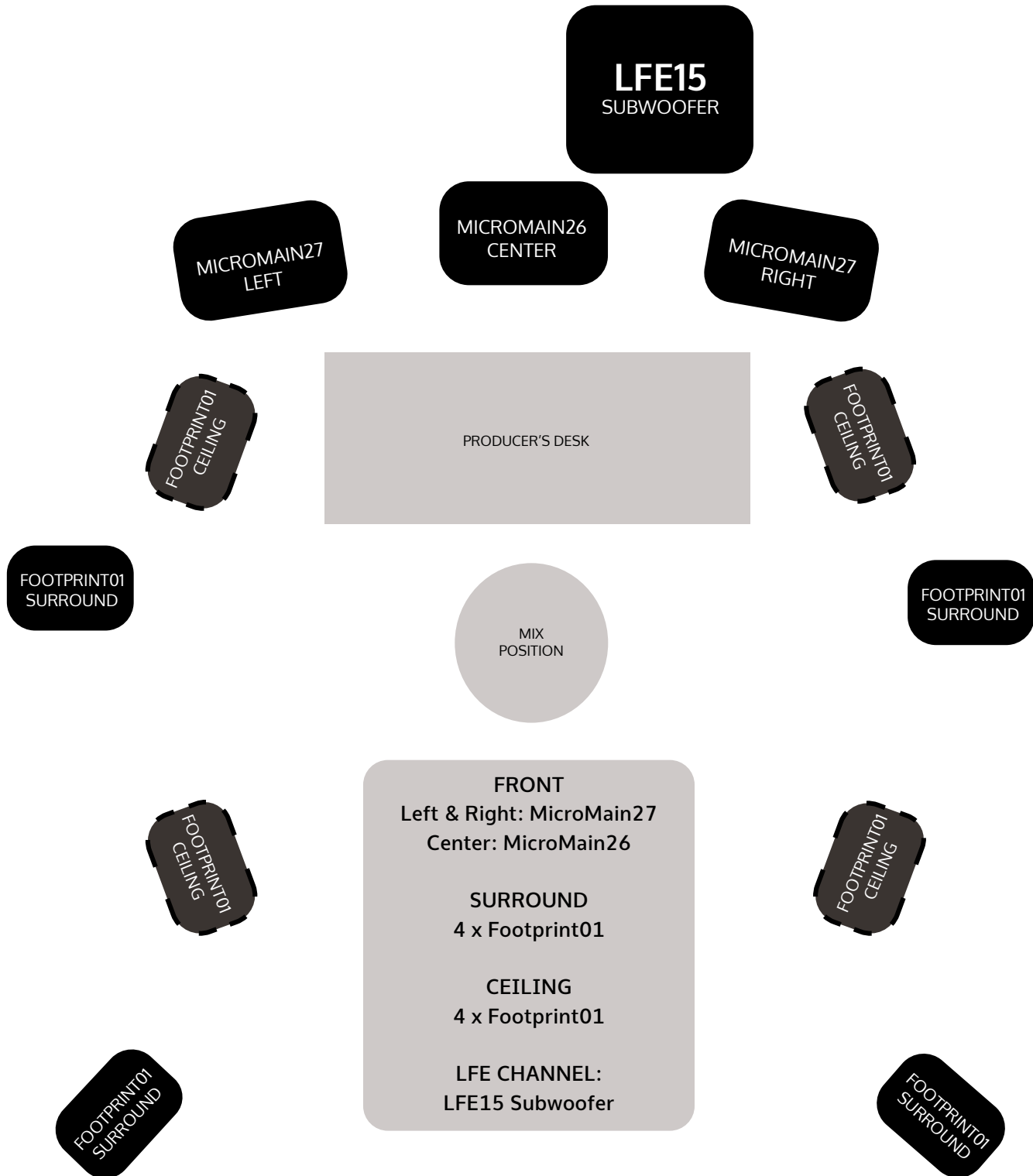
Caution! This subwoofer is capable of producing sound pressure levels in excess of 115dB which may cause permanent hearing damage. Always verify that input signal levels are attenuated before powering on the subwoofer.

Compatibility:

Designed to be compatible with all Barefoot Sound Monitors



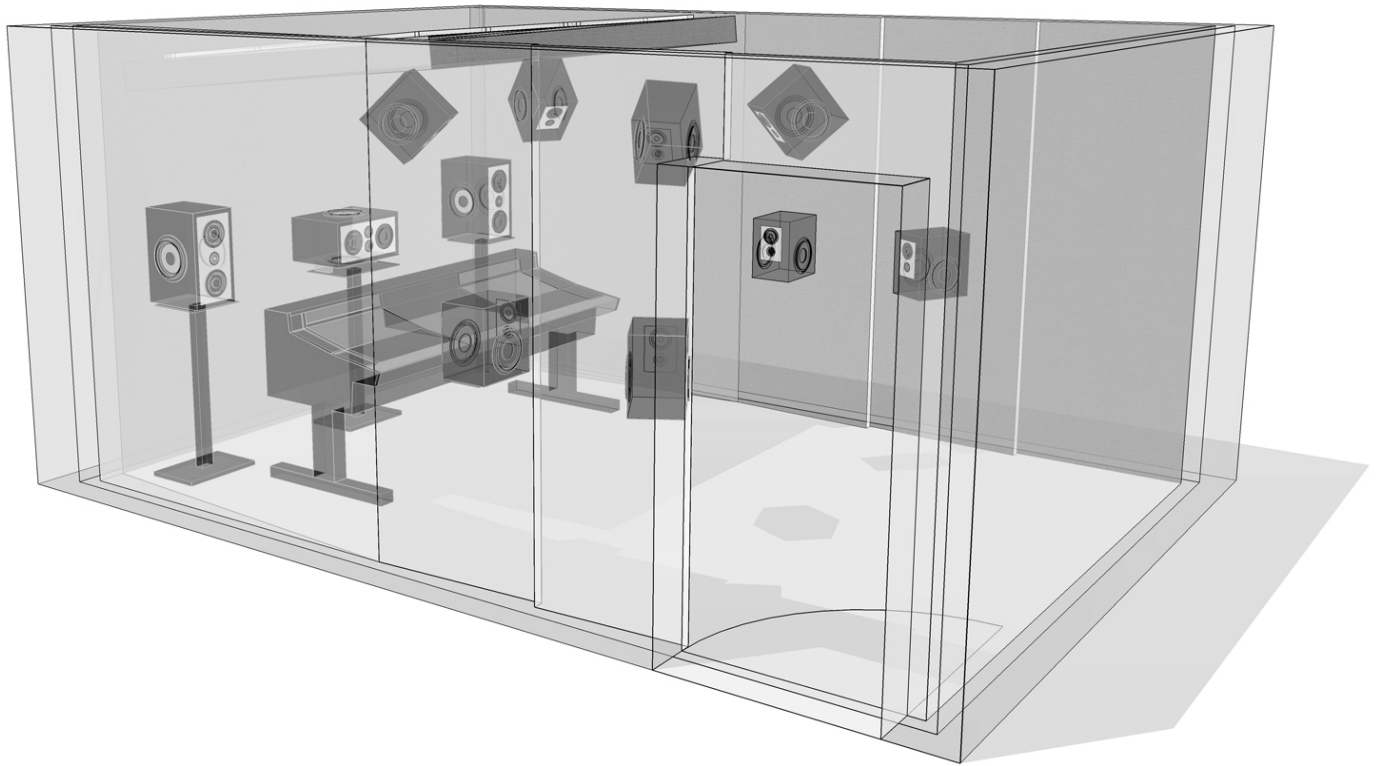
Monitor Section Example (7.1.4 setup)



NOTE

This 7.1.4 Dolby Atmos monitor selection is based around a room approximately 18' in length, 12' in width, and 10' in height. We recommend working with your integrator and pro audio dealer to select the optimal Barefoot Sound monitor package for the best performance and results based on your room dimensions.

Immersive Room Example (7.1.4 setup)



FRONT

Left & Right: MicroMain27

Center: MicroMain26

SURROUND

4 x Footprint01

CEILING

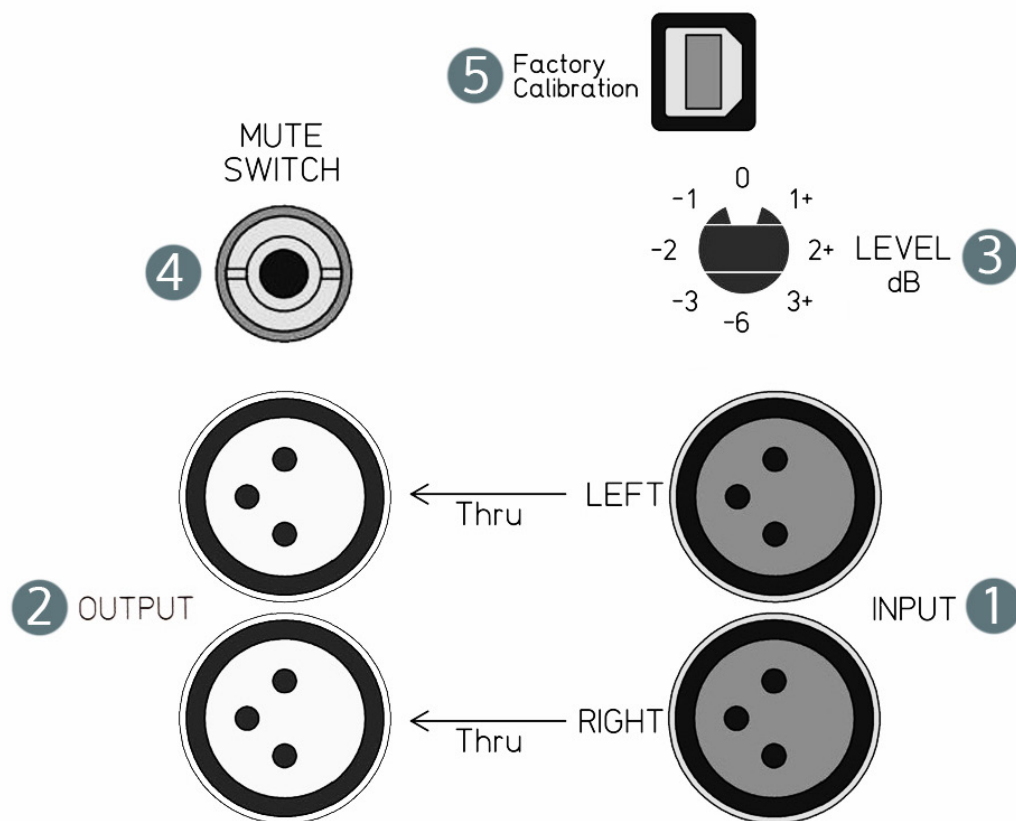
4 x Footprint01

LFE CHANNEL:

LFE15 Subwoofer

This 7.1.4 Dolby Atmos setup is designed for a room approximately 18' in length, 12' in width, and 10' in height. We recommend working with your integrator and pro audio dealer to select the optimal Barefoot Sound monitor package for the best performance and results based on your room dimensions.

Inputs & Controls



1. [INPUT] XLR

Connectors are designed to receive analog balanced line level audio signals from sources such as preamplifiers, sound cards, monitor controllers and mixing consoles. Pin 1 is tied to chassis ground. Pins 2 & 3 are fully floating differential inputs. Pin 3 must be referenced to ground for single-ended input signals.

2. [OUTPUT] XLR

Connector is designed to send signal thru.

3. [LEVEL]

Eight position rotary switch adjusts the loudness in precise increments (+3dB, 0, -1, -2, -3 and -6dB.) The 0dB setting corresponds to a sensitivity of 90dB at 1 meter distance using a -15dBV input signal.

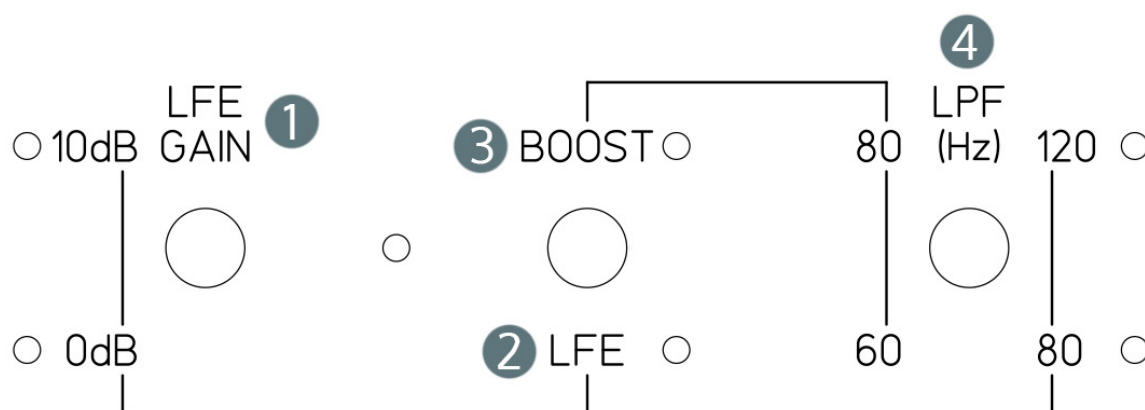
4. [MUTE]

1/4" TRS cable plugs into the footswitch controller. The LFE15 engages with a click of the foot pedal switch. The subwoofer can be bypassed or muted by pressing the foot pedal switch a second time.

5. [FACTORY CALIBRATION]

The universal serial bus connector is for factory adjustments and calibrations. This connector is NOT an audio input.

Modes



1. [LFE GAIN]

The LFE15 includes a +10dB gain selector to provide additional headroom in LFE applications. The +10dB gain can be applied to both the LFE Mode and the Boost Mode.

2. [LFE MODE]

Designed for use as a Low-Frequency Effects channel speaker in a surround system, the LFE Mode engages a 4th-order Low-Pass filter selectable at either 80 Hz or 120 Hz.

3. [BOOST MODE]

When used as a Low-Frequency enhancement channel in a stereo system, the Boost Mode engages a 1st-order Low-Pass filter selectable at either 60 Hz or 80 Hz. Unlike higher order filters that can cause phase cancellation near the cutoff frequency when combined with the stereo pair, this 1st-order filter results in a smooth low shelf response. This is great when you're composing or music listening, and you just want to be inspired by massive low end!

4. [LPF]

The LPF control allows you to select the low pass filter frequency, with options at either 60Hz or 80Hz. This flexibility enables precise tuning of the subwoofer to match your specific audio setup and room acoustics. Selecting the appropriate crossover frequency helps ensure seamless integration with your main speakers, whether you're aiming for tight, punchy bass at 60Hz or a fuller, more robust low end at 80Hz.

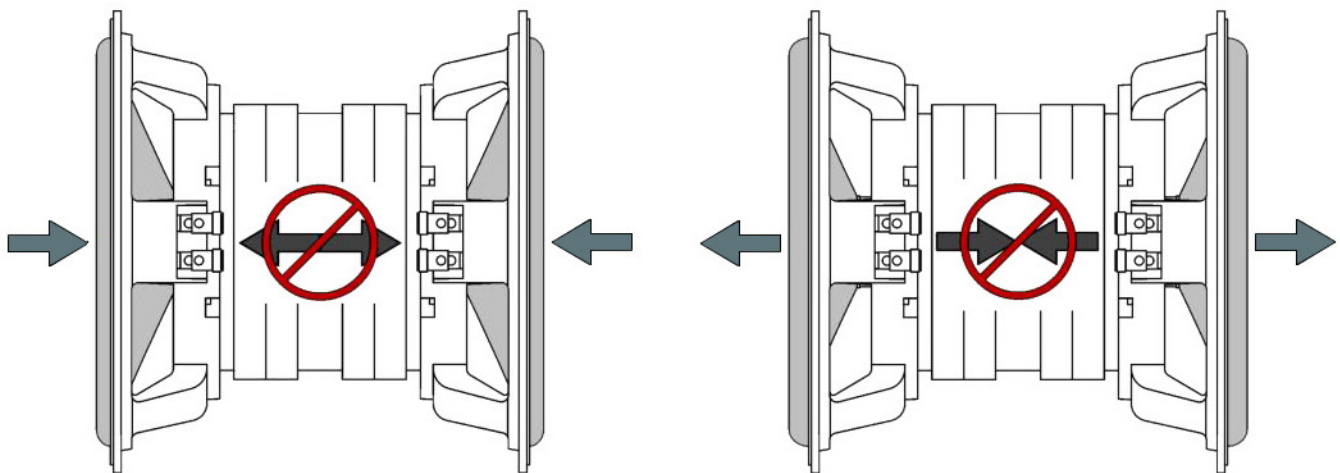
Dual-Force™ Technology

Cabinet vibrations are a significant source of distortion and coloration in most monitors. The primary mechanism that generates cabinet vibrations is simple Newtonian action and reaction. As the driver motor (magnet and voice coil) forces the cone to move back and forth in order to generate sound, the cone exerts an equal and opposite force on the motor. This force is transmitted through the driver frame to the cabinet, vibrating the cabinet walls and coloring the sound emitted by the cone. This effect is most especially prevalent in the low frequency drivers where the cone motion is greatest.

While, the LFE15 is built with a well braced cabinet, we also tackle the problem at its source by eliminating vibrations before they even begin. This is achieved through our innovative force cancellation design.

The low frequency drivers are mounted on opposing sides of the cabinet and their motors are locked together. As the cones are driven in and out in opposite directions the forces exerted on the motors cancel one another. The vibrations never make it to the cabinet because they are not allowed to develop in the first place.

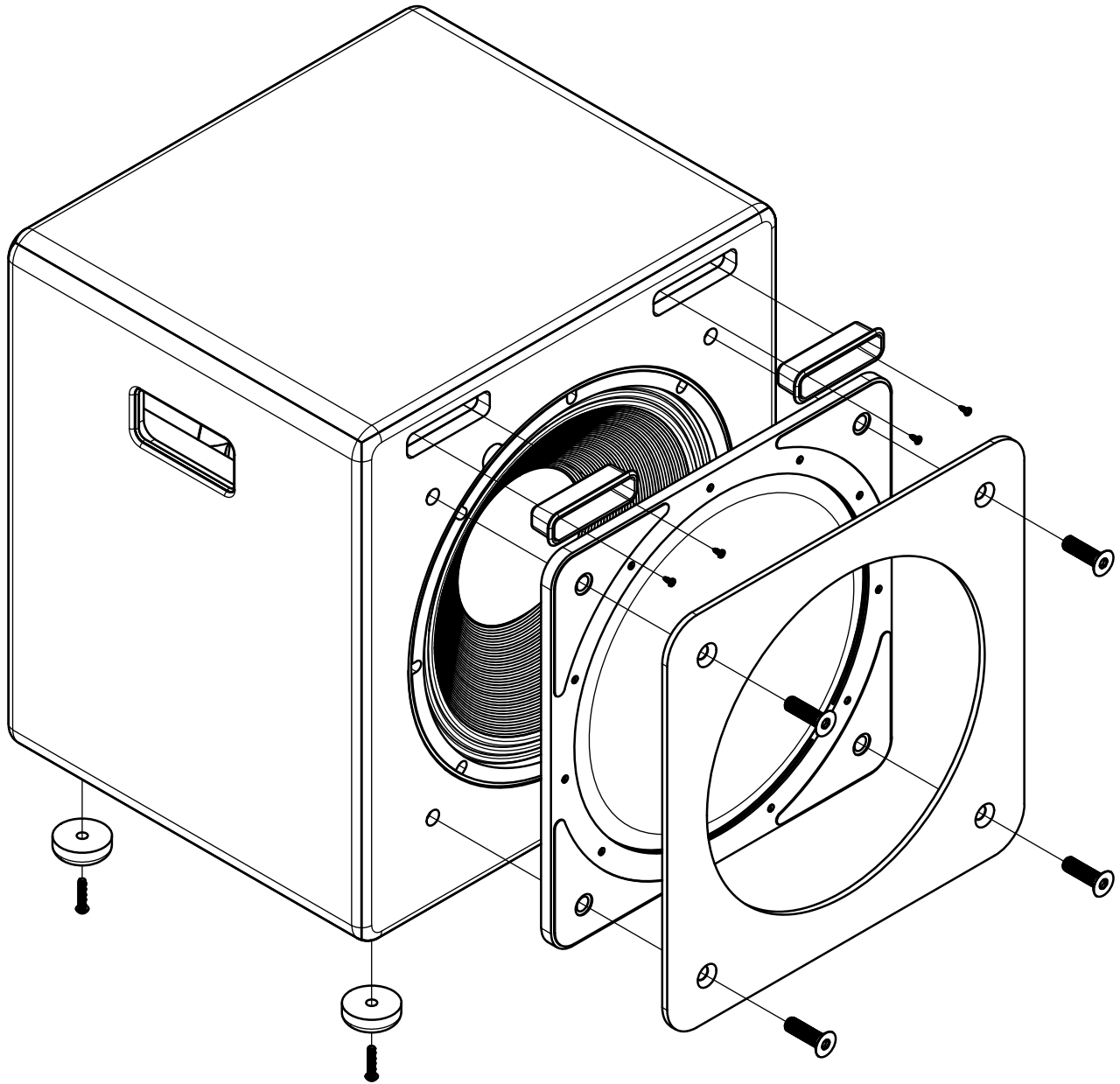
This layout has further benefits. Since the drivers are locked together, the motors and frames function as a massive internal metal cabinet bracing. And because the wavelengths generated by the woofers are much larger than the speaker cabinet dimensions, the drivers radiate as if they were a single point source.



Specifications

Description	15" Dual-Force™ Technology Low-Frequency Effects channel
Use	Low Frequency Effects channel in a Barefoot Sound surround system
Bass Response:	15 Hz @ -3dB Q = 0.707, Slope = 12 dB/octave
Max SPL:	Continuous 127 dB / Peak 130 dB
Subwoofers:	2 x 15" Dual-Force™ with neodymium motors
Low Pass Filter:	LFE Mode: 4th Order Butterworth 80 Hz or 120 Hz @ -3dB selectable Boost Mode: 1st Order Butterworth 60 Hz or 80 Hz @ -3dB selectable
Sensitivity:	90dB @ 1 meter with -15dBV input signal (Per channel. Level and Gain controls set to 0dB)
Cabinet:	Sealed enclosure, Machined aluminum control and amplifier plates, reinforced driver guards, recessed lift handles
Amplifier:	1400W
AC Power Input:	85VAC – 265VAC, 50 – 60 Hz
Power Consumption:	Idle = 5W, Maximum = 1500W
Weight	LFE15: 110 lbs (49 kg) Shipping: 135 lbs (61 kg)
Dimensions HxWxD	Cabinet: 18.5" Wide x 20.25 Deep x 22" Height (470 x 513 x 555 mm) Overall: 24" Wide x 25 Deep x 31" Height (609 x 635 x 787mm)
Box Dimensions HxWxD	30" Wide x 30 Deep x 34" Height

Drawings & Dimensions



DIMENSIONS WDXH:

Cabinet:

18.5" Wide x 20.25 Deep x 22" Height (470 x 513 x 555 mm)

Overall:

24" Wide x 25 Deep x 31" Height (609 x 635 x 787mm)

Limited Warranty

BAREFOOT SOUND warrants electronic components and cabinetry for a period of three (3) years against manufacturing defects, covering parts and labor for necessary repairs. Moving speaker components such as tweeters, midranges and woofers are warranted for a period of one (1) year against manufacturing defects.

Shipping fees incurred from returns for under-warranty service in the first 30-days will be paid by BAREFOOT SOUND. All shipping fees both to and from BAREFOOT SOUND following this 30-day period must be paid by the customer. All returns, both during and following the 30-day period, must be affected via the Procedures for Obtaining Warranty Service described below.

BAREFOOT SOUND makes no other warranty, either express or implied, including but not limited to implied warranties of merchantability, fitness for a particular purpose, or conformity to any representation or description, with respect to this product other than as set forth below. BAREFOOT SOUND makes no warranty or

representation, either express or implied, with respect to any other manufacturer's product or documentation, its quality, performance, merchantability, fitness for a particular purpose, or conformity to any representation or description.

Except as provided below, BAREFOOT SOUND is not liable for any loss, cost, expense, inconvenience or damage that may result from use or inability to use the product. Under no circumstances shall BAREFOOT SOUND be liable for any loss, cost, expense, inconvenience or damage exceeding the purchase price of the product.

The warranty and remedies set forth below are exclusive and in lieu of all others, oral or written, expressed or implied. No reseller, agent or employee is authorized to make any modification, extension or addition to this warranty.

Warranty Conditions

The above Limited Warranty is subject to the following conditions:

This warranty covers only normal use of the product. BAREFOOT SOUND shall not be liable under this warranty if any damage or defect results from (i) misuse, abuse, neglect, improper shipping or installation; (ii) disasters such as fire, flood, lightning or improper electric current; or (iii) repairs, service or alteration by anyone other than an authorized BAREFOOT SOUND representative; (iv) damages incurred through incorrect connection or handling, abnormal conditions, high humidity, deliberate abuse, power surges, water spills, or any other accidents.

You must retain your bill of sale or other proof of purchase to receive warranty service.

No warranty extension will be granted for any replacement part(s) furnished to the purchaser in fulfillment of this warranty.

To return a defective product, please contact our Customer Service Department at service@barefoot-sound.com for a Return Merchandise Authorization (RMA) number and follow the Return of Products Instructions below. The RMA is valid for 10 days from date of issuance. Returns will not be accepted without an RMA.

Procedures for Obtaining Warranty Service

RMA (Returning Merchandise Authorization) Policy:

If repairs are required, the customer must obtain a RMA number and provide proof of purchase. RMA and services are rendered by BAREFOOT SOUND only. Any shipping costs after 30 days (starting from the original date of purchase) on any item returned for repair is the customers' responsibility. All returned parts must have a RMA number written clearly on the outside of the package along with a letter detailing the problems and a copy of the original proof of purchase. No COD packages will be accepted. No package will be accepted without a RMA number written on the outside of the package.

1. If the product must be repaired, a RMA number (Return Merchandise Authorization Number) will be issued for shipment to our repair department. Please follow the instructions given by BAREFOOT SOUND technical support staff to ship your product. BAREFOOT SOUND will not accept any shipments without a RMA number.
2. Pack the product in its original box or a well-protected box, as outlined by BAREFOOT SOUND Customer Service. BAREFOOT SOUND will not be responsible for shipping damage/loss of any product not shipped in its original packaging. BAREFOOT SOUND will not be responsible for shipping damage/loss of any product outside the original 30-day paid service period. It is very important that you write the RMA number clearly on the outside of the package. Ship the product with a

copy of your bill of sale or other proof of purchase, your name, address, phone number, email address, description of the problem(s), and the RMA number you have obtained to the address provided to you by BAREFOOT SOUND Customer Service.

3. Upon receiving the product, BAREFOOT SOUND will repair or replace your product (at BAREFOOT SOUND's discretion) and will ship it back to you within 2 weeks (dependent on parts availability) via FedEx.
4. Cross-exchange (Parts only): You will need to provide a valid credit card number as a deposit guarantee when the RMA number is issued. Once approval has been obtained on your credit card, the part(s) will be shipped FedEx. You will need to ship defective part(s) back to BAREFOOT SOUND within 15 days to avoid charges to your credit card. If such charges are incurred, the shipped part(s) will be billed at the then current price.
5. BAREFOOT SOUND will pay for shipping to and from the customer only within the first thirty days following the original product ship date. Following this 30-day period all shipping fees both for under warranty and post warranty repairs are the sole responsibility of the customer. The customer also assumes full liability for losses or damages resulting from shipping as well as all responsibility to pursue remuneration for such issues with their selected carrier.

Post Warranty Repair

BAREFOOT SOUND accepts no liability for problems caused by after-market software or hardware modifications or additions. BAREFOOT SOUND is not responsible for any loss of work ("down time") caused by a product requiring service. This warranty is null and void if the defect or malfunction was due to damage resulting from operation not within manufacturer specifications. It will

also be null and void if there are indications of misuse and/or abuse. BAREFOOT SOUND has the option of voiding the warranty if anyone other than an BAREFOOT SOUND technician attempts to service the product. BAREFOOT SOUND will not warrant any problems arising from an act of God (lighting, flooding, tornado, etc.), electrical spikes or surges, or problems arising out of hardware, software, or additional devices added to

complement any product manufactured by BAREFOOT SOUND. Under no circumstances will BAREFOOT SOUND be responsible for any refund or remuneration exceeding the original purchase price of the product less any shipping fees. BAREFOOT SOUND will not be held responsible for typographical errors on sales receipts,

repair tickets, or on our website. BAREFOOT SOUND makes every effort to make sure all information on our website is correct.

Warranty Exclusions

BAREFOOT SOUND accepts no liability for problems caused by after-market software or hardware modifications or additions. BAREFOOT SOUND is not responsible for any loss of work ("down time") caused by a product requiring service. This warranty is null and void if the defect or malfunction was due to damage resulting from operation not within manufacturer specifications. It will also be null and void if there are indications of misuse and/or abuse. BAREFOOT SOUND has the option of voiding the warranty if anyone other than an BAREFOOT SOUND technician attempts to service the product. BAREFOOT SOUND will not warrant any problems

arising from an act of God (lighting, flooding, tornado, etc.), electrical spikes or surges, or problems arising out of hardware, software, or additional devices added to complement any product manufactured by BAREFOOT SOUND. Under no circumstances will BAREFOOT SOUND be responsible for any refund or remuneration exceeding the original purchase price of the product less any shipping fees. BAREFOOT SOUND will not be held responsible for typographical errors on sales receipts, repair tickets, or on our website. BAREFOOT SOUND makes every effort to make sure all information on our website is correct.

Service Request

In order to serve you better, please complete the service request form in the following link for your Barefoot Sound studio monitors. Once submitted and reviewed, a service representative will contact you.

<https://barefootsound.com/service-request/>

BAREFOOT

Barefoot Sound LLC

barefootsound.com